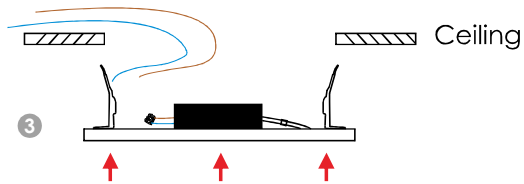
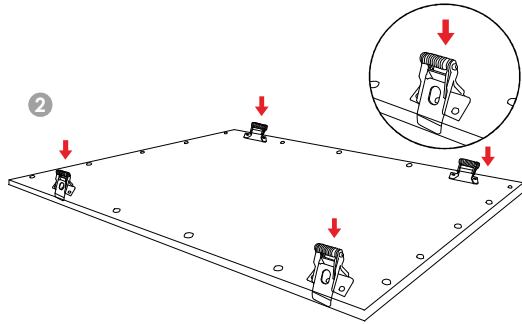
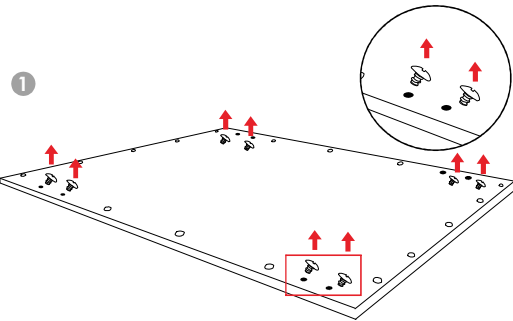


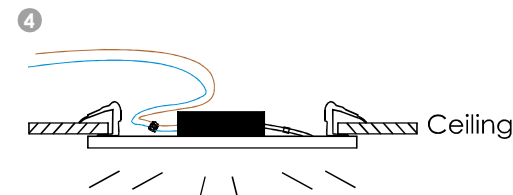
► RECESSED IN A CUT-OUT HOLE

Accessories	3030	3060	6060	6262	30120	60120
		X 4			X 6	



Cut-Out:

3030: 280X280mm	6060: 580X580mm
3060: 280X580mm	6262: 600X600mm
30120: 280X1180mm	60120: 580X1180mm



90
lm/w **Ra**
80+



ROHS
COMPLIANT **30000**
HOURS

IP20

LED



Storage Info

Environmental Operating	-10°C to +40°C
Environmental Rating	Dry or damp location rated
Environmental Storage	40° C to +60° C



BEFORE YOU BEGIN

Read these instructions completely and carefully.

WARNING/AVERTISSEMENT

RISK OF ELECTRIC SHOCK

- Turn power off before inspection, installation or removal.
- Properly ground electrical enclosure.

RISK OF FIRE

- Follow all NEC and local codes.
- Use only UL or IEC approved wire for input/output connections. Minimum size 18 AWG (0.75mm²).

Prepare Electrical Wiring

Refer to **LED Panel Specification** for more lamp electrical data info.



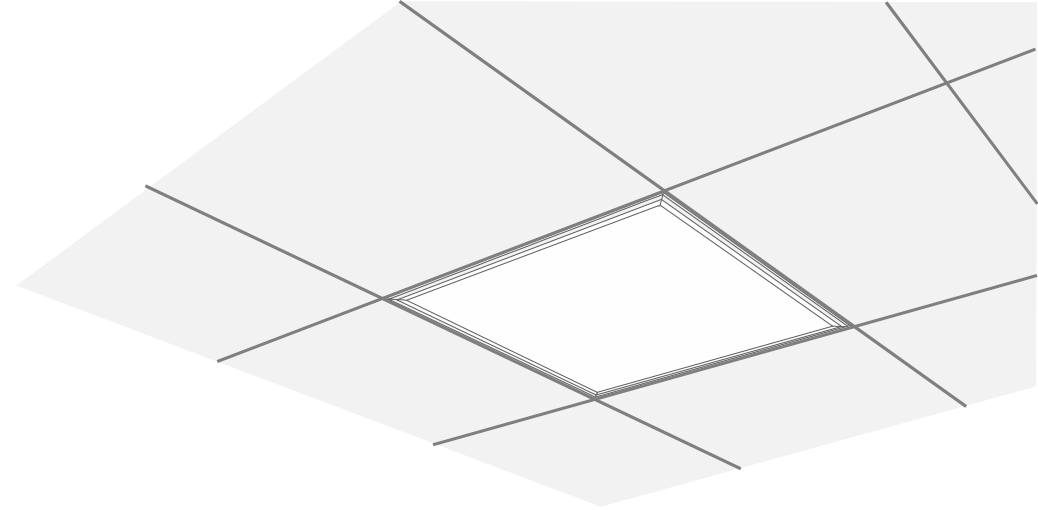
Electrical Requirements

- The LED luminaire must be connected to the mains supply according to its ratings on the product label.



Grounding Instructions

- The grounding and bonding of the overall system shall be done in accordance to local electric code of the country where the luminaire is installed.

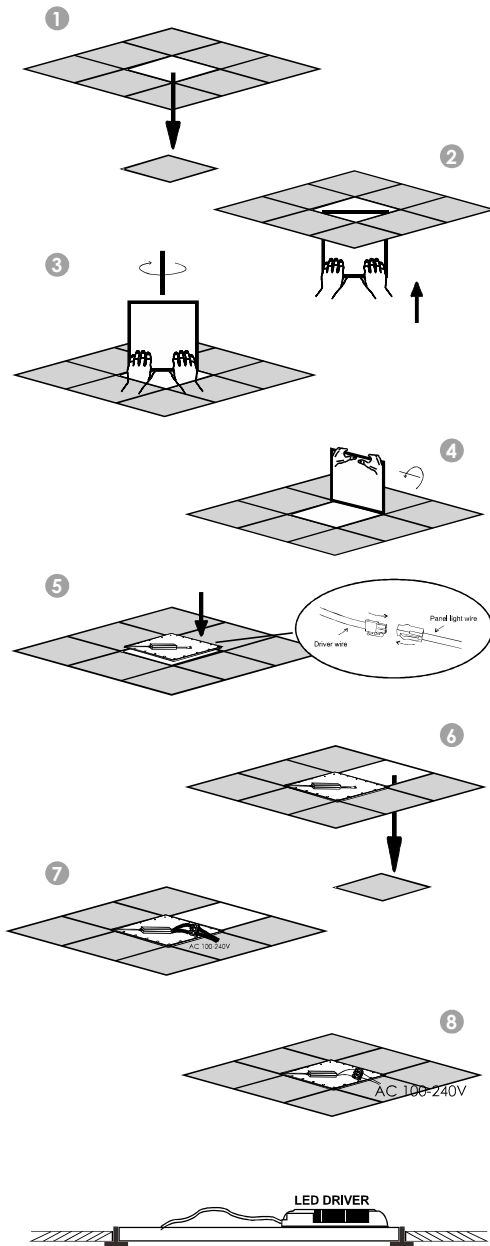


Lights Up Art Life

www.lightman-led.com | info@lightman-led.com

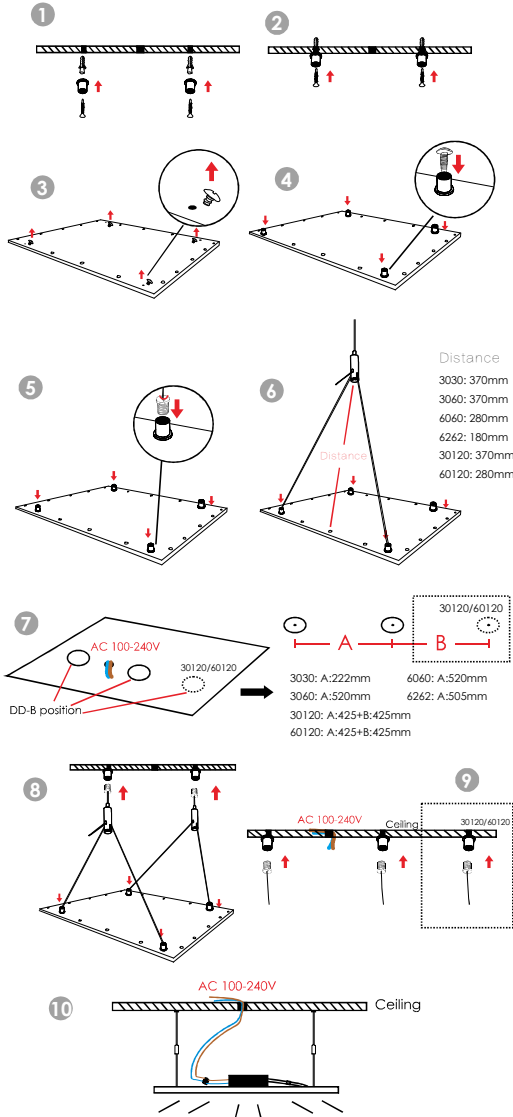
LED PANEL LIGHT USER MANUAL

► RECESSED IN FALSE-CEILING FRAME



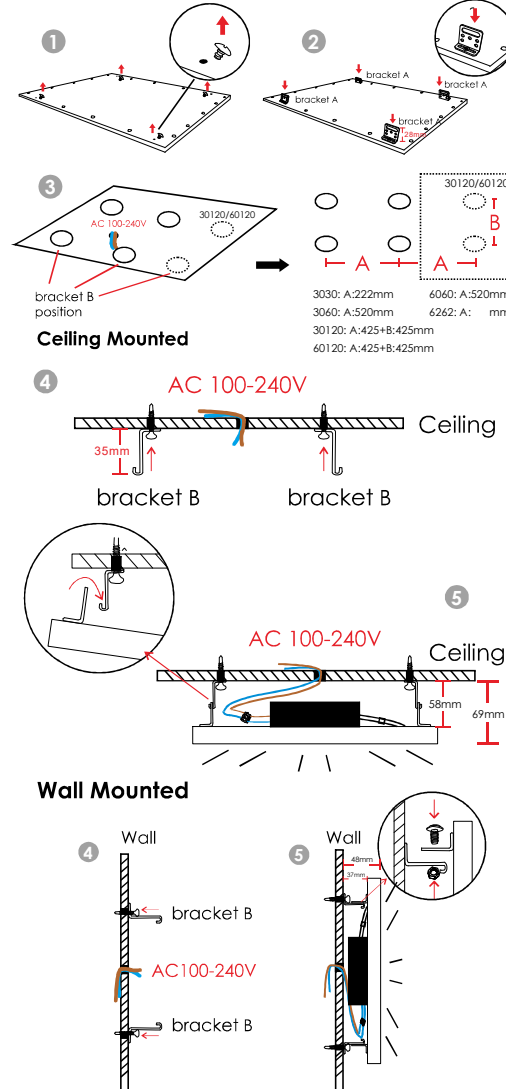
► SUSPENSION

Accessories	3030	3060	6060	6262	30120	60120
		X 2			X 3	
		X 2			X 3	
		X 4			X 6	
Wire A		X 2			X 3	
Wire B		X 2			X 3	



► CEILING & WALL MOUNTED

Accessories	3030	3060	6060	6262	30120	60120
Bracket A		X 4			X 6	
Bracket B		X 4			X 6	
		X 4			X 6	
		X 4			X 6	
		X 4			X 6	
		X 4			X 6	



► FRAME MOUNTED

Accessories	3030	3060	6060	6262	30120	60120
Frame A		X 2			X 2	
Frame B		X 2			X 2	
		X 8			X 8	
		X 4			X 6	

